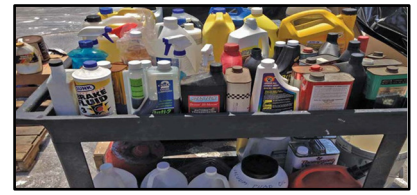


2021 Montgomery County, PA Household Hazardous Waste Drop-Off Events



By appointment only, preregistration required,
Registration available at MontcoPARecycles.com

DATES:

Saturday, April 24

Boyertown Middle School East
2020 Big Road, Gilbertsville

Saturday, May 1

Indian Valley Middle School
130 Maple Avenue, Harleysville

Saturday, May 8

Montgomery County Community College
Enter at 595 Cathcart Road, Blue Bell

Saturday, June 12

Temple University–Ambler Campus
Enter at 1431 E. Butler Pike, Ambler

Saturday, June 19

Abington Junior High School
Enter at 2056 Susquehanna Road, Abington

Saturday, September 25

Spring-Ford 9th Grade Center
400 South Lewis Road, Royersford

SUNDAY, October 24

Lower Merion Transfer Station
1300 N. Woodbine Avenue, Penn Valley

Free residential collection events are held outdoors. Montco residents may also attend any Household Hazardous Waste event held by Bucks, Chester, Delaware, or Philadelphia Counties.

Please do not contact the host sites, as they are not affiliated with the events.

In case of severe weather, call 610.278.3618, option 6 for event status.

Contact us at:

MontcoPARecycles.org

recycling@montcopa.org

610.278.3618



Pennsylvania Department
of Environmental
Protection



**MONTCO PA
RECYCLES**



MontcoPARecycles.org

Registration available at
MontcoPARecycles.org



Follow us at [MontgomeryCountyRecycling](https://www.facebook.com/MontgomeryCountyRecycling)

MONTGOMERY COUNTY BOARD OF COMMISSIONERS

Valerie A. Arkoosh, MD, MPH, *Chair* • Kenneth E. Lawrence, Jr., *Vice Chair* • Joseph C. Gale, *Commissioner*

COVID-19 SAFETY GUIDELINES

- Montgomery County events are following state guidelines and public health restrictions.
- Events may be cancelled based on the status of the pandemic as per state requirements.
- Materials must be in the trunk of the car or bed of the truck or SUV. Leave items at home that are not for the event.
- If you need your gas can or container returned, please tape a note to it stating that you want to keep it.
- You must stay in your car and wear a mask while in the event site.
- You may arrive any time within your registered appointment window.
- Please print out your ticket if possible (or write your name and appointment time on a piece of paper) and place it on your dashboard.
- If you cannot attend the event, please cancel your appointment through [Eventbrite](#) or by contacting [Montco Recycling](#), as others may be waiting for an opening.

ACCEPTABLE MATERIALS

PAINT PRODUCTS	OUTDOOR PRODUCTS	AUTOMOTIVE PRODUCTS	HOUSEHOLD PRODUCTS	HOUSEHOLD OTHER
Turpentine	Swimming Pool Chemicals	Grease & Rust Solvents	Drain Openers	Acids, Caustics, Solvents
Paint Thinners	Weed Killers	Fuel Additives	Rug Cleaners	Flammables
Strippers & Removers	Septic Tank Degreasers	Carburetor Cleaners	Wood & Metal Cleaners	Oxidizers
Oil-Based Paints	Asphalt Sealers	Transmission/Brake Fluid	Mothballs/Flakes	Reactives
Stains, Varnish	Caulking Compounds	Antifreeze	Adhesives/Solvents	Lead
Shellac	Joint Compound	Car(lead-acid), Truck, Motorcycle, Marine, Batteries	Rechargeable Batteries, Lithium, Ni-Cad, Button, Lead Acid	Mercury (Thermostats & Thermometers)
Other Solvent-Based Paint Products	Roof Cements	Gas, Oil, Gas Oil Mixture	Spot Removers, Dry Cleaning Fluid	Fluorescent Tubes, Ballast, and CFLs
Wallpaper Cement	MINI Propane Tanks, No BBQ Tanks	Road Flares, No Marine Flares	Fire Extinguishers	Aerosols
Spray Paint	Pesticide		Kerosene	Electric Oil-filled Heaters

UNACCEPTABLE MATERIALS

Explosives & Ammunition	Electronics/Televisions	Asbestos	Appliances/White Goods
Infectious or Medical Waste, Prescription Drugs	BBQ-Sized Propane Tanks (leave at local exchange sites)	Radioactive Waste	Freon/Refrigerants
Tires	Helium Tanks	Unidentified Waste	25- or 50-Gallon Drums
Latex Paint* (Water-Based)	Gas Cylinders	Alkaline Batteries (Trash)	Smoke Detectors

* Take off lid, dry out paint, discard can without lid; or pour paint into plastic bag with absorbent material (clay based kitty litter, saw dust, rags) place bag and can without lid, in trash. Paint hardener can also be purchased at hardware stores.

DROP OFF GUIDELINES

- NO TVs, electronics, or appliances will be accepted.
- Event workers will unload your materials so please remain in your vehicle with your windows up.
- **BUSINESSES AND CONTRACTORS WILL BE TURNED AWAY**, no commercial/industrial waste accepted.
- Bring all substances in original containers with labels. Items must be identifiable. Do not mix materials.
- Tighten lids on all containers. If containers are leaking, pack in larger container with newspaper to soak up leaks.
- Maximum amount accepted is 25 gallons or 220 pounds. No 25- or 50-gallon drums.
- There are no permanent drop off locations in the region for household hazardous waste, only the listed collections.