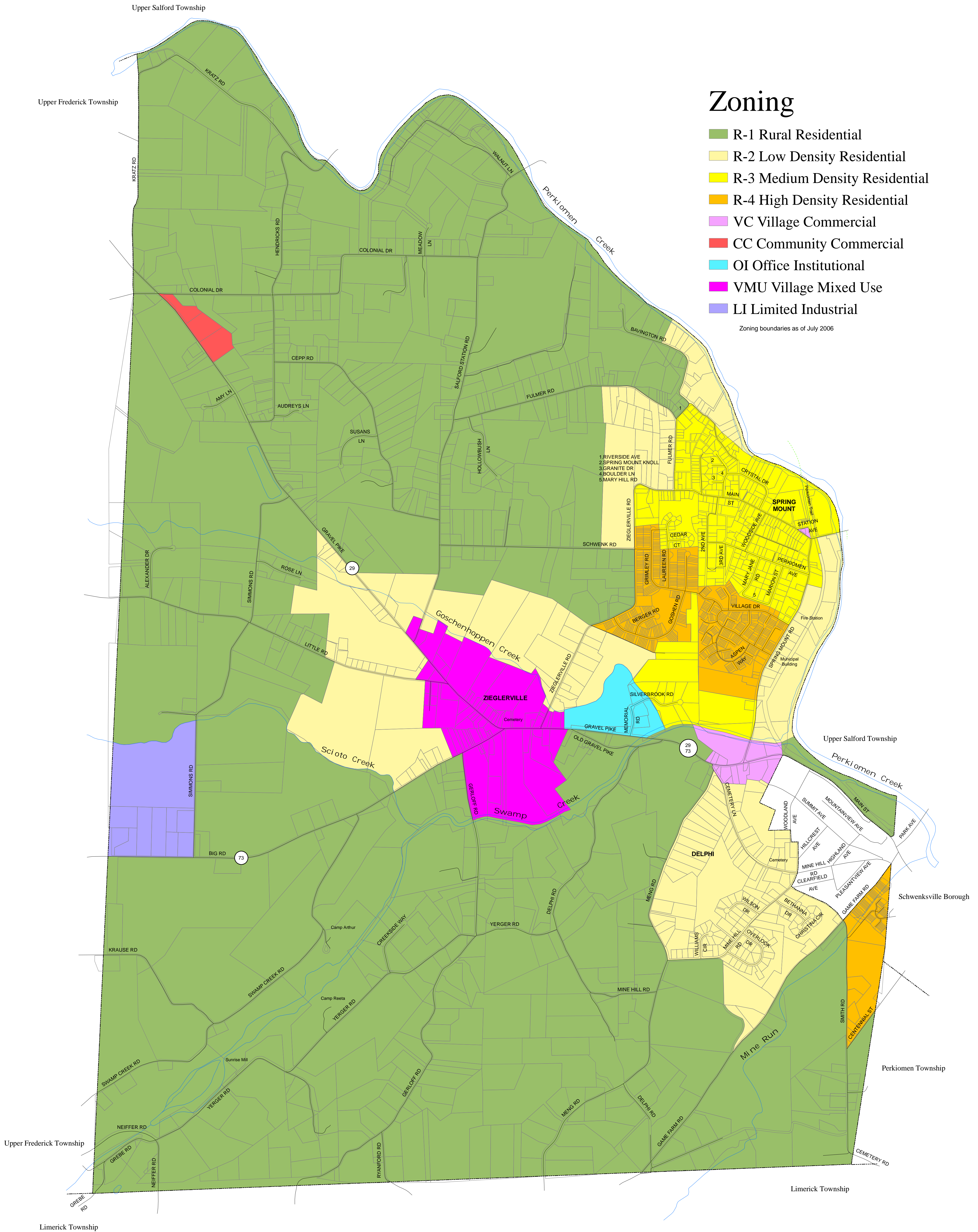


Lower Frederick Township Montgomery County, Pennsylvania

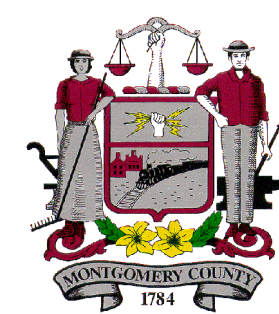
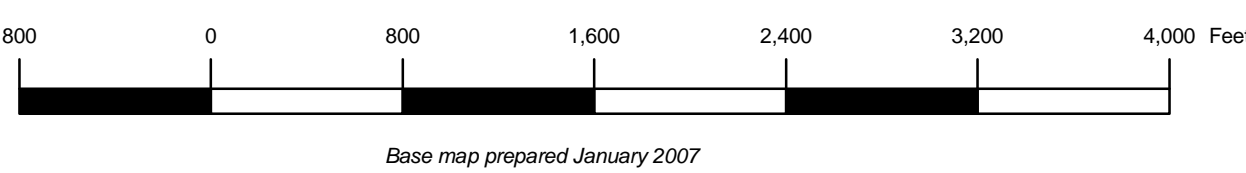
Zoning

- R-1 Rural Residential
- R-2 Low Density Residential
- R-3 Medium Density Residential
- R-4 High Density Residential
- VC Village Commercial
- CC Community Commercial
- OI Office Institutional
- VMU Village Mixed Use
- LI Limited Industrial

Zoning boundaries as of July 2006



MCPC Montgomery County Planning Commission
 Montgomery County Courthouse - Planning Commission
 PO Box 311 • Norristown PA 19304-0311
 (p) 610.278.3722 • (f) 610.278.3941
 www.montcopa.org/plancom



Serial Number: 1586

29 Pennsylvania Route

This map is based on 2005 ortho photography and official sources. Property lines were compiled from individual block maps from the Montgomery County Board of Assessment Appeals, with no verification from the deed. This map is not meant to be used as a legal definition of properties or for engineering purposes.