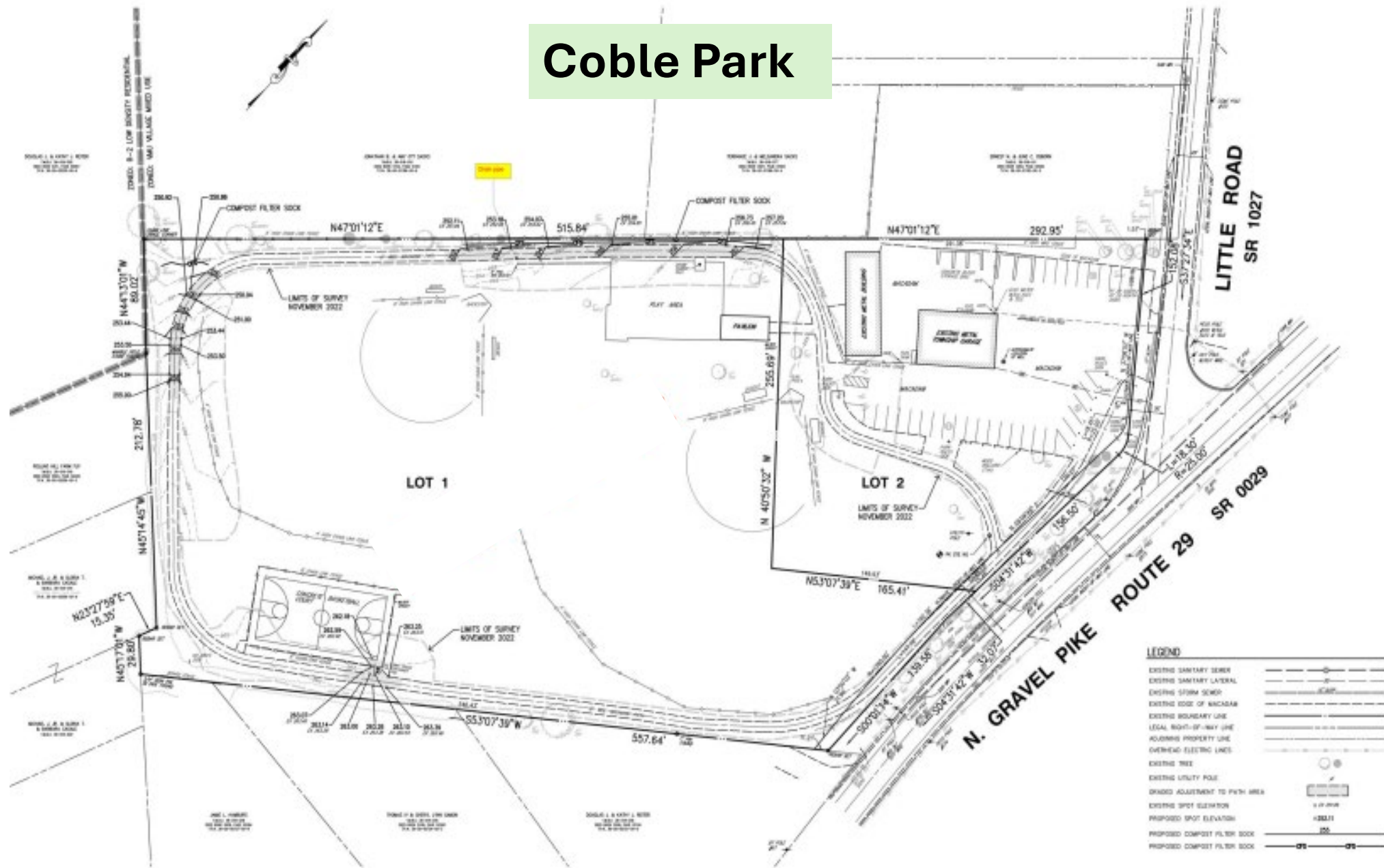


Coble Park Rehabilitation Project

Site History

- **6 Acre+ Property**
 - **Multi-Use Community Park**
 - **Municipal Maintenance Building**
- **Land Purchase in 1980, Dedicated in 1992**
- **Our Most Used “Activity” Park**
- **Current Amenities:**
 - **Pavilion with 6 Picnic Tables**
 - **Playground**
 - **1/3 Mile Macadam Walkway w/Benches**
 - **2 Baseball Fields w/Dugout Seating**
 - **Basketball Court**
 - **Open Areas for Events**

Coble Park



Coble Park Rehabilitation Project

Planned Project Objectives

- **Improve Utility of Property**
 - **Correct Severe Drainage/ Manage Stormwater Across Site**
 - **Eliminate Stormwater Intrusion Into Maintenance Building**
- **Improve Safety and ADA Accessibility**
 - **Replace Playground Equipment and Surfacing**
 - **Modify Both Cross and Longitudinal Slopes of Walkway to be ADA Compliant**
 - **Resurface Walkway to Remove Numerous Cracks and Heaving**
- **Upgrade Worn Assets**
 - **Replace Wood Pavilion With Clad Structure**
 - **Resurface Basketball Court**
 - **Improve Main Baseball Diamond & Dugouts**
 - **Replace Rusty/Rotted Fencing**
- **Improve Natural Resilience/Habitat Value**



Parking lot is deteriorated and breaking up

Maintenance area fence rotted and collapsing





Walking path is badly buckled in many areas, presenting trip hazards and making alternative uses such as roller blading impossible





Pavilion is rotting and has questionable support structure





Chain link fences are rusting



Drainage flows toward the path and ultimately over the walking path ... where it freezes in winter.





Baseball field will be unusable for days

Coble Park Rehabilitation Project

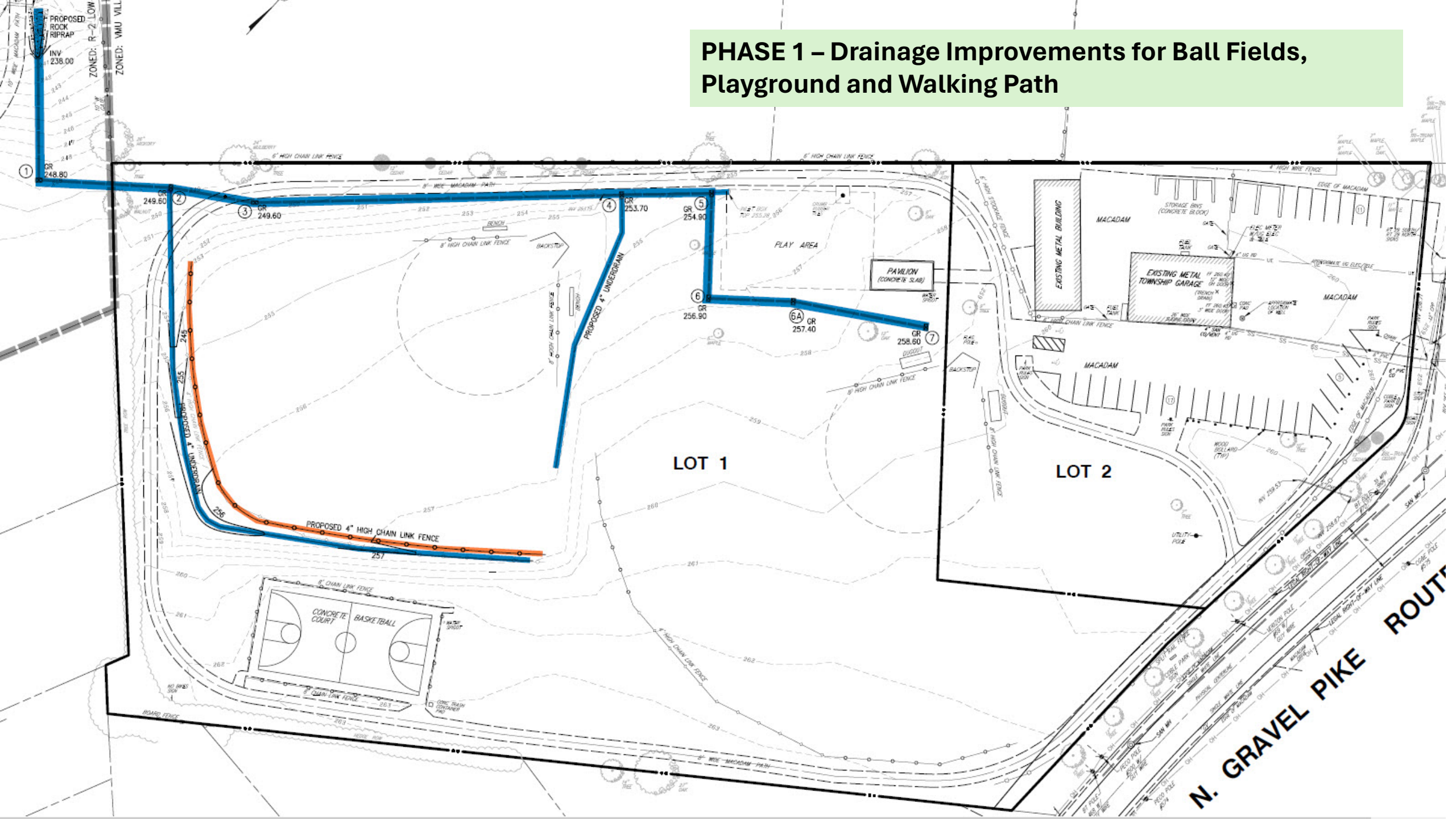
Why Now?

- **Extensive Work to be Completed in Phases Over Time**
 - **Allows Planning and Funding Over Time**
 - **Reduced Burden on Township Resources**
- **Prestige Development (“Farm View Estates”) Planned Direct Connection To Coble Park Via Trail Across 35.5 Acre Open Space**
- **Proposed Scioto Creek Crossing and Connection of Genterra to Trail**
- **Melbourne Hills Subdivision Access Across Little Road**

Coble Park Rehabilitation Project Phases

- Phase 1 – Drainage Improvements for Ball Fields, Playground and Walkway
- Phase 2 – Parking Area Drainage and Paving
- Phase 3 – Repair and Repave Entire ADA Walking Trail
- Phase 4 – Playground Installation
- Phase 5 – Pavilion Replacement
- Phase 6 - Naturalization Greening Plan

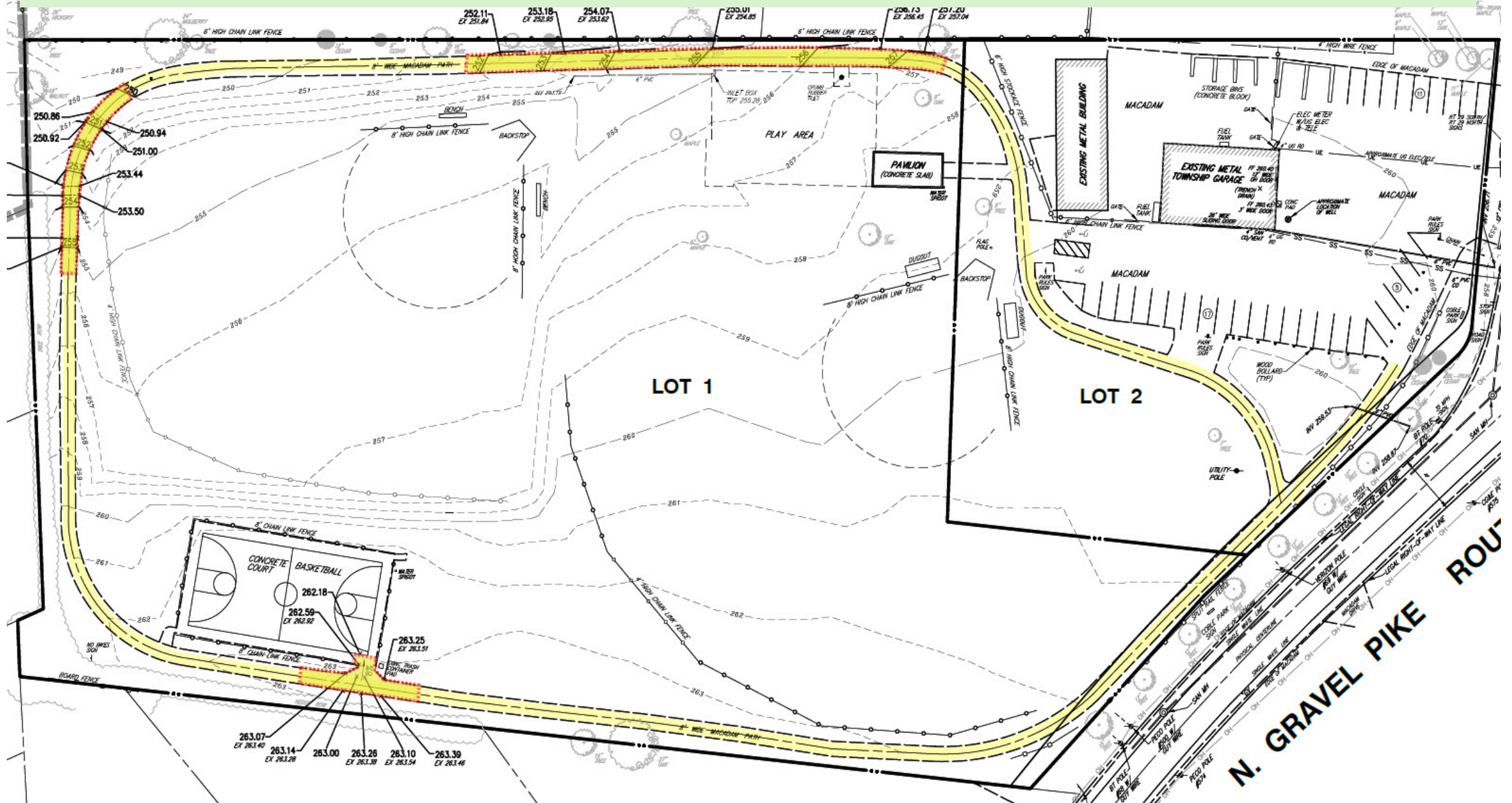
PHASE 1 – Drainage Improvements for Ball Fields, Playground and Walking Path



PHASE 2 – Drainage for Parking Lot and Municipal Garage



PHASE 3 – Modify Cross and Longitudinal Slopes to Make Walking Path ADA Compliant, Repave Entire Path



Coble Park Rehabilitation Projected Cost*

	LABOR & EQUIPMENT	MATERIALS	CONTINGENCIES/ ADMIN & INSP	TOTALS
Phase 1 - Drainage Ball Fields, Playground & Walking Trail	\$136,790	\$57,335	\$34,943	\$229,068
Phase 2 - Parking Drainage & Paving	\$99,805	\$42,995	\$25,704	\$168,504
Phase 3 - ADA Walking Trail	\$50,365	\$23,185	\$13,239	\$86,789
Phase 4 - Playground Installation	\$177,150	\$321,058	\$74,731	\$572,939
Phase 5 - Pavilion Replacement	Costars Quote Installed on Existing Pad			\$34,583
Phase 6 - Naturalization Greening Plan		Estimated		\$12,500

Project Estimate: \$1,104,383

*** All PA COSTARS Supplier Quotes & Davis-Bacon Compliant Prevailing Rates**

Public Comments To:

Contact: Parkboard@lowerfrederick.org

Link on the Township Website Park Board Page